

SEA FROST BAIT FREEZER

BF1 ~ BF2 ~ BF3



The Sea Frost Bait Freezer system consists of:

- Cold Plates or Wrapped Box Liner (hidden cooling coils built into boat)
- Refrigerant Control Valve
- Copper Connecting Lines
- Bullet Drier

- Compressor / Condensing unit
- Thermostat

OPERATION

With the thermostat in the “on” position, the compressor, fan, and pump (if equipped) will operate. Ten minutes after starting the compressor the area near the valve or the top of a hidden coil box will begin to cool and frost.

If you do not observe cooling, with the compressor and fan running, switch off the unit to avoid damage.

After several hours the box temperature will cool to well below freezing. The first plate or the top section of a wrapped box will cool first. Because it freezes first, all the moisture suspended in the air within the box condenses and freezes at this plate. Frost is not a good indication of proper operation; check the temperature with a thermometer. When the box and contents cool to the desired setting, the compressor and fan will cycle on and off periodically to maintain the set temperature.

CONDENSING UNIT LOCATION AND MOUNTING

The design of the Bait Freezer (BF) allows the air-cooled condensing unit to be placed in an enclosed space such as a locker or engine room.

Mount the BF level with the compressor at the bottom. It may be bulkhead or platform mounted. Rubber Wellnut inserts are installed on the bottom and back of the cabinet to attach the BF to brackets or shelving. Use 1/4-20 machine screws.

Installation Requirements

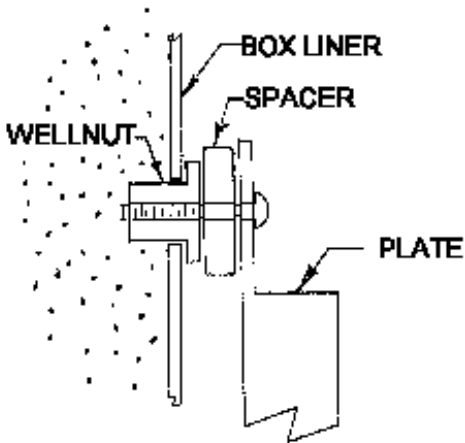
- **Never block the inlet nor outlet.** Service access and installation requires that the front and left end (inlet/outlet side) be exposed.
- **Provide for driest, coolest air for intake.** Use standard 4" duct hose to draw air in from the cabin area to insure the coolest, driest air supply. Intake ducting from the exterior of the boat may cause damp salt air to be drawn in which will reduce unit life. For intake or exhaust through a finished panel, order a flange grill.
- **Discharge does not need ducting if a vent in the area allows warm air to escape.** An un-ducted unit in a poorly ventilated small space will heat the air, lowering the capacity of the unit and possibly causing damage by overheating the compressor.
- **Total combined air duct length for intake and discharge should not exceed six feet.**

Water Cooling

Water-cooling is standard on BF2 and BF3 models. Water from an air conditioning pump manifold can be plumbed into the BF condensing unit and triggered by the 110-volt supply labeled "pump" or a dedicated pump can be installed. A flow of two to three GPM is sufficient. Use of water-cooling is not mandatory; the unit will operate with air-cooling only. If the condensing unit is mounted in a confined area with little ventilation, or in a very hot engine room, water-cooling must be used.

EVAPORATOR PLATE INSTALLATION

Mount the plates on opposite walls as high as possible to take advantage of thermal convection. Install the plates with the Wellnut, spacers, and screws provided.



Mount Sea Frost plates with the Wellnut hole fasteners. Use a template or the plate itself to locate the mounting holes in the box. Drill a 3/16" pilot hole and then increase this hole to 3/8". Install the screw into the plate through the spacer then tighten the screw in the Wellnut. Push the rubber mounts into the pre-drilled holes. Tighten the screws.

Figure 1 ~ Wellnut Installation Detail

SWAGELOK FITTINGS

Swagelok fittings come to you completely assembled, finger-tight, and ready to use.

Do not take apart the fittings before you are ready to use them; dirt can get into the fitting and cause leaks. You also risk damaging the threads of the fittings if the nuts are removed.

This is a double ferrule system. The most common installation problem encountered with Sea Frost is the incorrect assembly of the fittings. Assemble all fittings as shown in figure 2.



Note: Loosen the nut slightly before assembly, and then retighten with your fingers before tightening with a wrench. This avoids cross threading.

Swagelok Installation Instructions

1. Always leave two inches of straight, undistorted copper tube leading to all Swagelok fittings to allow proper connection. Measure the tubing the correct distance from the end and mark with a pencil. Refer to Table #1.

Table # 1 Scribe Line Measurements

Copper Tubing Diameter (Inches)	Measurement from the end of the tubing (Inches)
3/8	11/16
5/16	5/8
1/4	9/16

2. Insert the marked copper tubing, into the Swagelok tube fitting body. See figure 3. The tubing should rest firmly on the shoulder of the fitting body so that the pencil mark is flush with the nut. This mark will also show that the tube has not moved before tightening. Tighten the nut with your fingers. As you tighten the fitting, the space from the pencil mark to the shoulder increases.



Figure 3 ~ Insert Tube into Fitting Body

3. Scribe the nut at the six O'clock position. See figure 4.



Figure 4 ~ Scribe Fitting at Six O'clock

4. Tighten the nut wrench snug. Wrench snug is the first point when the tube cannot be pulled from the fitting, (when the ferrules tighten enough to contact the tubing).
5. Hold the fitting body with a back-up wrench and tighten the nut one-and-one-quarter turns (1¼) from the scribe mark.



Note: Make all connections with two wrenches, do not allow the fittings to turn or twist when tightening. Tighten Swagelok fittings to a torque spec, not infinite tightness. Be sure your starting point is wrench snug. A distorted tube will give a false starting point.

Figure 5 ~ Turn the Nut 1 ¼ Turns

Reconnecting Pre-Swaged Fittings

You can disassemble and retighten Swagelok tube fittings many times.

1. Insert the tubing with pre-swaged ferrules into the fitting body until the front ferrule seats.
2. Tighten the nut by hand.
3. Tighten approximately one-quarter turn with a wrench.

EXPANSION VALVE

Valve Installation on a Plate System

Trim the tube ends on the plates as necessary. Allow at least 3/4" of clean, straight tubing to insert into the Swagelok fitting.

Install the valve to supply one of the 3/8" tubes from one of the plates. Either plate may be supplied first. Position the valve to allow access to the screw cap on top of the valve. The valve cap should be up.

Connect the jumper line between the remaining tube on the first plate to either tube on the second plate.

Connect a return line to the remaining tube on the second plate; this return line connects to the compressor.

Valve Installation on a Wrapped Hidden Coil System

Trim the tube ends on the coil as necessary. Allow at least 3/4" of clean, straight tubing to insert into the Swagelok fitting. Refer to the Swagelok installation instructions on page three.

Install the valve to supply the top 5/16" tube end on the hidden coil. Position the valve to allow access to the screw cap on top of the valve. The valve cap should be up.

Connect a return line to the remaining tube end; this return line connects to the compressor.

BULLET DRIER

Note: Unpack and fit the drier last. This prevents moisture from saturating the desiccant in the drier.

Use the 5/16" x 1/4" Swageloks to connect the tube from the compressor to the input side of the drier and connect the output side of the drier to the valve. Note: Arrows are stamped into the bullet drier showing flow direction.

COPPER TUBE RUNS

Two copper lines connect the plates or wrapped hidden coil, and the compressor; one is 3/8" and the other is 1/4".

Run the 1/4" liquid line between the condensing unit and the expansion valve. You will fit the bullet drier to this line.

The 3/8" suction line connects the last plate or hidden coil tube end to the suction port on the BF cabinet.

Run the 1/4" liquid line in contact with the 3/8" suction line for several feet from the cabinet. Wrap these two tubes tightly together with electrical tape and insulate this section. This will improve operation and prevent moisture from condensing on the coldest section of these tubes. Insulating the remaining length of 3/8" return line to the compressor is not necessary.

After each cut, cap the copper tube ends with the plastic caps until you make the Swagelok connection. Support the tubing and protect from chafe.



WARNING: The BF unit is shipped pressurized with nitrogen. Before removing the Swagelok caps on the connection ports, remove the plastic caps on the service valve

covers and depress the valves cores to vent any existing pressure.

Compressor Connections

Remove the Swagelok caps from the liquid and suction fittings. Attach the union bodies. This is a pre-swaged connection, which is 1/4 turn from wrench snug.

Connect the 1/4" line to the condenser fitting and 5/16" line to the compressor. Tighten these fittings 1 1/4" turns from wrench snug.

THERMOSTAT LOCATION

Thermostat location on a Plate system

Mount the thermostat in a convenient location where the sensing bulb will reach a mounting screw on a plate. The bulb of the sensor must have good thermal contact with the plate. Attach the bulb to the plate using the stainless clip using one of the existing plate mounting screws.

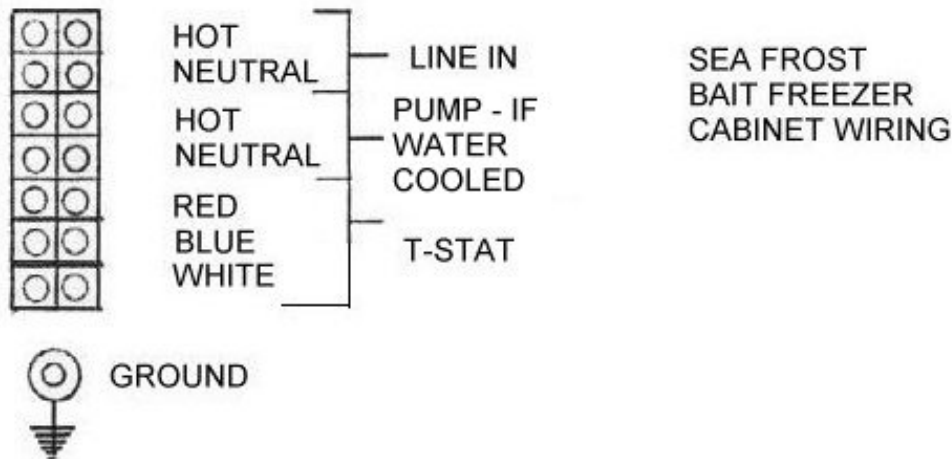
Thermostat location on a Wrapped Hidden Coil Box

Position the thermostat close enough for the sensing bulb to reach the middle of the wrapped box. Attach the bulb to the box wall with marine adhesive. **Do not drill into a wrapped box liner for any reason.**

Wiring

The Ranco Electronic Temperature Control operates on low voltage (24VAC) supplied by the transformer in the compressor cabinet.

A 15' wiring harness is fitted to the thermostat. Use red, blue, and white 16-gauge wire to extend this harness if a longer length is needed. Attach the wires to the terminal strip using #8 ring terminals, matching corresponding wire color.



110-Volt circuit

A separate 15-amp breaker is required for the 110-volt supply. A built in transformer powers the thermostat circuit. *For operation the BF must have 110-volt power.*

COMMISSIONING

Attach clean, purged gauges to the suction service port on the condensing unit. Connection to the high-pressure port is not necessary when starting a new system. This provides aid in fault diagnosis.

1. Pressurize with nitrogen or R-134a only
2. Check for leaks
3. Evacuate
4. Charge

- This system operates with refrigerant R-134a. The proper charge (and maximum charge) is 12 ounces.
- The refrigerant may be liquid-fed into the low side after evacuation, before the compressor is operated.

The expansion valve regulates the evaporator pressure and is adjusted to maintain a constant evaporator pressure. The proper charge must be added before the valve can be accurately set. Adding or increasing the charge will not raise the low side pressure and will cause overcharging.

ADJUSTING THE VALVE

Before operating the compressor, unscrew the plastic cover on the valve body to access the adjusting knob. Counter-clockwise rotation decreases the pressure. Clockwise rotation increases the pressure. One turn should equal a 2 psi pressure change. Check that the valve is set with the threads of the adjusting knob close to the end of the valve body.

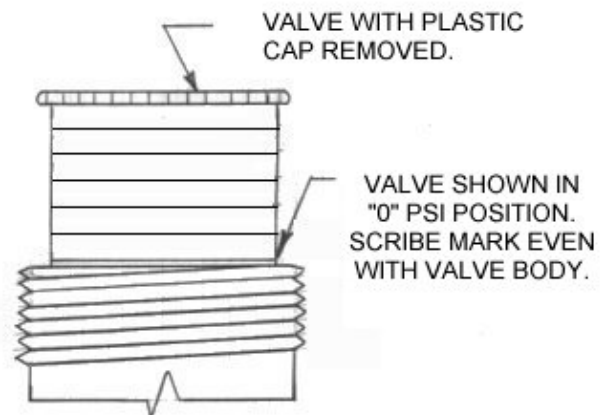


Figure 7 ~ Valve

Start the compressor. The valve must be adjusted to a 0 to 4 psi reading on the low side gauge port. Be sure your gauge is set at 0 before hook-up. Allow several minutes between each adjustment. Replace the cap after each adjustment to prevent moisture from forming on the adjusting knob; the moisture will freeze and cause the valve to malfunction. The valve must be dry before final cap replacement. Operate for 30 minutes to confirm proper valve setting and operation.

To clear the valve of dirt or chips if adjustment is not possible, turn the valve adjustment knob clockwise about 3 turns momentarily, and then back to the proper setting while the compressor is running. Do not leave the valve in the open position, which causes high backpressure and may cause the compressor to overload.

After satisfactory adjustment turn off the thermostat. Wait until the pressure equalizes on both gauges before you disconnect the gauges and then recap the service ports. When the valve is dry, insulate the valve body with a piece of insulating sleeve and wrap it with cork tape; this will prevent condensation. Insulating the valve is not necessary if it is in the box. The constant pressure valve sets the refrigerant boiling point and the pressure setting will indicate the minimum temperature that the BF system can obtain. Set the valve pressure at the lowest possible pressure setting that will cool the box. Problems occur when the pressure is high and the thermostat is set low; the thermostat will not be satisfied.

READING THE SIGHT GLASS

With the compressor operating, a clear sight glass indicates a sufficiently charged system. To determine the meaning of "clear", view the sight glass when the system is off. This is a "clear" glass.



WARNING: A clear sight glass can also indicate a completely *empty* system. Anytime the compressor is started, white foam should appear in the sight glass indicating the presence of refrigerant. The foam may disappear quickly. If foam is observed and the system is not cooling, the system is empty. Do not operate the system in this empty condition. Operation in this mode will ruin the compressor. Turn off the main breaker to the control panel until the system can be properly leak tested and recharged.

Fast moving white foam with the compressor operating indicates an insufficient charge level. Watch closely for a transition from foam to total liquid, (indicated by a clear sight glass). This transition point can be missed if not given proper attention. The sight glass may show large bubbles even when the charge is sufficient, so it is important to differentiate between "foam" and "bubbles". The foam condition has velocity and direction; the bubbles are large, temporary, and nearly stationary. Do not try to chase away these larger bubbles with more refrigerant; overcharging will occur. Air in the

system may give a false sight glass reading, which could lead to overcharging. If in doubt, discharge a suspected overcharged system to continuous foam and slowly add refrigerant to clear the glass. *Monitor the sight glass continually.* In a warm system, when the cabinet is above freezing (32.F) upon start-up, the sight glass may take several minutes to clear. A cold cabinet may show a clear glass within seconds of start-up.



SIGHT GLASS DETAIL		
Clear or Empty	Stationary Bubbles	Foam (Low Charge)
		

Figure 8 ~ Sight Glass Detail

Troubleshooting note: The operating pressure of the system **will not** indicate the amount of refrigerant in the system. The valve will not give proper operation or pressure if it is undercharged. Check the valve scribe line. It should correlate to gauge pressure.

The system requires enough refrigerant to supply liquid to the valve. If the valve has a steady hissing sound then the charge is sufficient. If the valve is sputtering then it is low. If the valve is making a noticeable roar it is empty. If the low side pressure is properly set the high side pressure will be 80 to 135 psi depending on the air temperature (50 to 95 degrees F.) at the unit. Upon start up the valve body will begin to frost.

THERMOSTAT OPERATION

The thermostat is pre-set and locked at the factory. When locked the keypad is disabled and changes to the settings cannot be made. To change the settings the lockout switch must be placed in the unlock position.

To access the lockout switch:

1. Switch off the power.
2. Remove the four screws and cover.
3. Slide the lockout switch to the right to the unlock position.
4. Replace the cover.
5. Re-power the system.
6. To program refer to table # 2.

Table #2 Thermostat Programming Instructions

Step	Display	Description
1	F or C	Fahrenheit or Celsius Scale Press the set key once to access the Fahrenheit / Celsius scale. The display will show the current status, either F for degrees Fahrenheit or C for degrees Celsius. <i>The thermostat has been pre-set at the factory for Fahrenheit.</i> Press the up or down arrow key to choose between the F and C.
2	S1 (blinking)	Setpoint Temperature Press the set key again to access the setpoint. The display will show the current set point. <i>The setpoint has been pre-set to 0 degrees F.</i> Press either the up or down arrow key to change the setpoint to the desired temperature.
3	DIF 1 (blinking)	Differential Temperature Press the set key again to access the differential. The display will show the current differential. <i>The differential temperature has been pre-set at 5 degrees F.</i> Press either the up or down arrow key to increase or decrease the differential setting.
4	C1 / H1	Cooling or Heating Mode Press the set key again to access the heating or cooling mode. The display will show the current mode. C1 for cooling or H1 for heating. The Thermostat has been pre-set for C1. Do not change this setting. The BF does not work in heat mode. Press the set key once more and programming is complete.

Note: Pressing the set key accepts the setting and brings you to the next step. You must push the **set** key through all steps to return to the temperature display to allow the compressor to operate.

DEFROSTING

The unit will require defrosting as the frost layer builds up. You can defrost the plates using several methods:

- Allow the plates to warm above freezing.
- Pour warm water over the plates.
- Heat the plates with a hair dryer.
- Scrape the plates with a spatula or ice scraper to remove excessive frost build up.

Table # 3 Bait Freezer Specifications

Bait Freezer Specifications			
	BF 1	BF 2	BF 3
A.C. amp draw	4 @ 110 volts	6 @ 110 volts	6 @ 110 volts
Horsepower	1/4	1/4	3/8
Height	16"	16"	16"
Width	14.5"	14.5"	14.5"
Depth	7.5"	7.5"	7.5"
Cooling	Ducted Air Cooled	Ducted Air and Water Cooled (remote water pump required)	Ducted Air and Water Cooled (remote water pump required)
Compressor unit weight	36 lbs	42 lbs	42 lbs

BAIT FREEZER WITH WRAPPED BOX LAYOUT

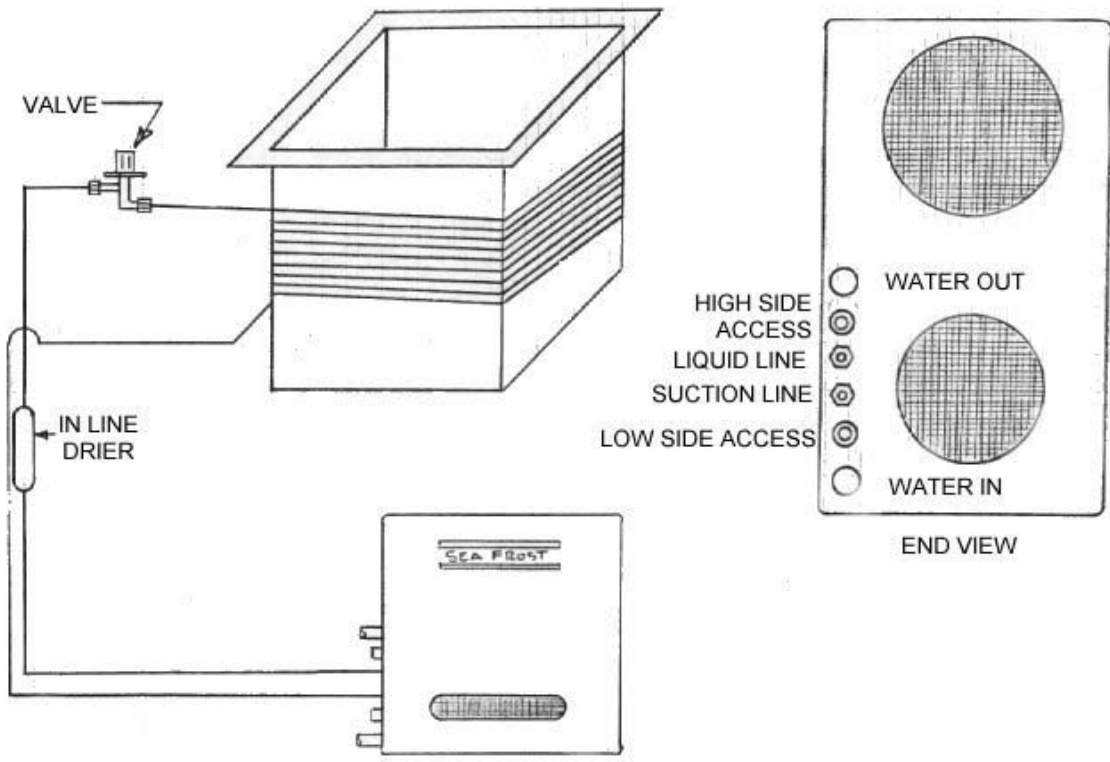


Figure 9 ~ Wrapped Box Layout

BAIT FREEZER WITH PLATES LAYOUT

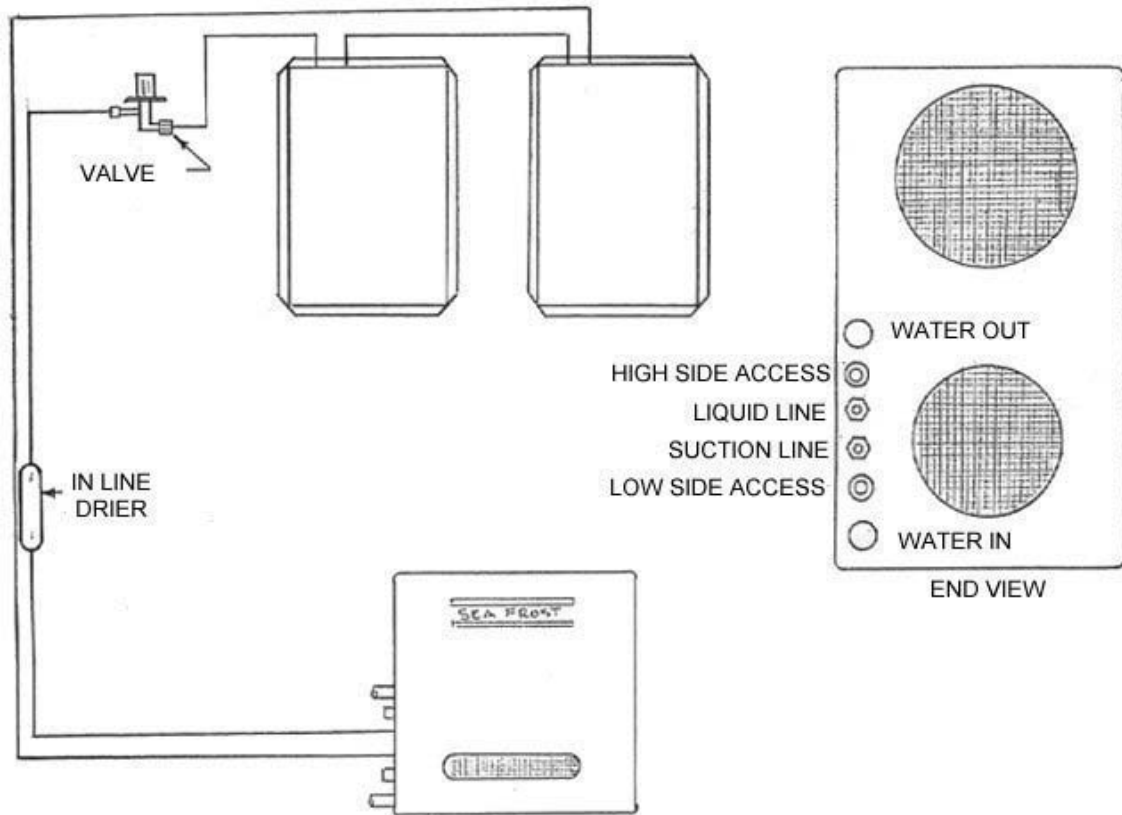


Figure 10 ~ Plate Layout